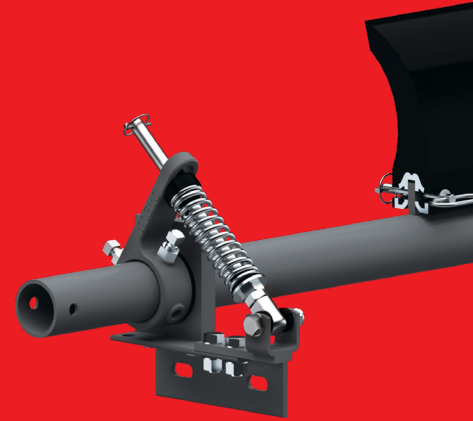


Belt Maintenance Equipment - Belt Cleaners



mato

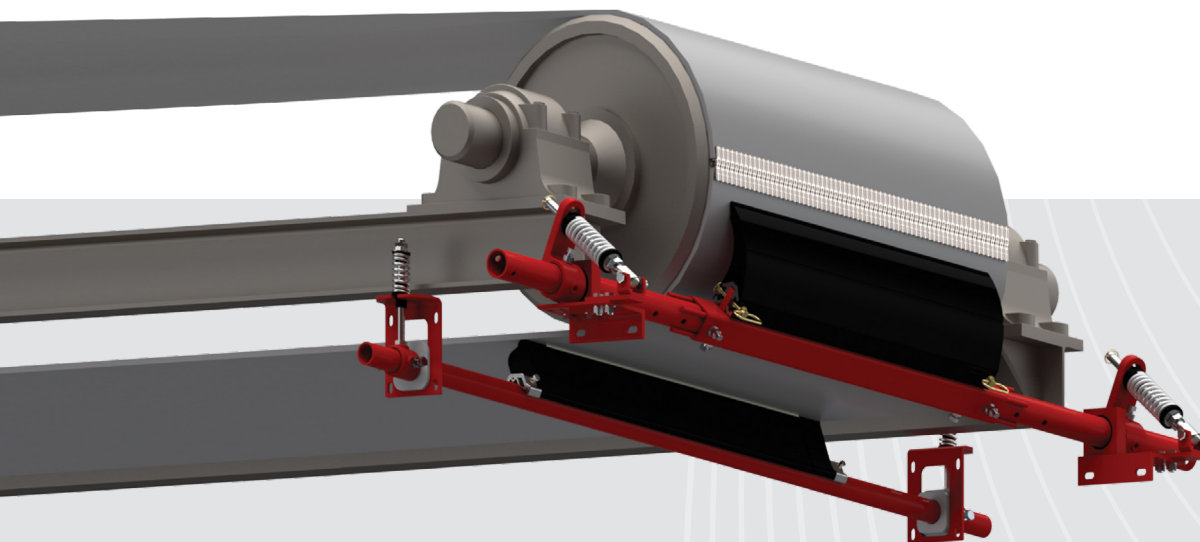
Product Overview

INTRODUCTION

Belt Maintenance Equipment - Belt Cleaners

Installation of primary and secondary belt cleaners enhances the performance of any conveyor system.

- ✔ Reducing the amount of carry back material
- ✔ Reducing material spillage to minimize clean up work
- ✔ Reducing the potential hazard of belt mis-tracking
- ✔ Increase conveyor belt life
- ✔ Increase production time due to excessive spillage
- ✔ Protection against wearing components on the conveyor line



Type of Belt Cleaners

Primary Belt Cleaners

- ▶ Tungsten Carbide for vulcanised conveyor systems
- ▶ Polyurethane for conveyor systems with mechanical fasteners
- ▶ Mounted on the head pulley of the conveyor system below the centre line out of the material flow for protection
- ▶ Removes the bulk of material flow from the conveyor

Secondary Belt Cleaners

- ▶ Tungsten Carbide for vulcanised conveyor systems
- ▶ Specialised Tungsten Carbide for conveyor systems with mechanical fasteners
- ▶ Mounted directly behind where the conveyor belt leaves the head pulley
- ▶ Removes the sticky fine or wet material for when Primary Cleaners cannot be installed on the head pulley
- ▶ Multiple secondary cleaners to be fitted on extreme applications

PRODUCT OVERVIEW

Primary Cleaners



MDP - MATO Drop-on Primary Cleaner

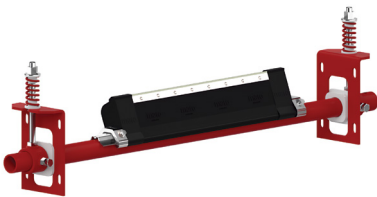


MTP - MATO T-Slot Primary Cleaner



MCP1 - Tungsten Carbide Cleaner

Secondary Cleaners



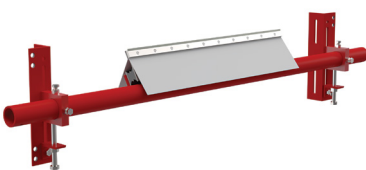
MUS2 - Tungsten Carbide



MUS3 - Tungsten Carbide



MUS3 - Polyurethane



MCS2 - Tungsten Carbide



MCS3 - Tungsten Carbide



MCS4 - Tungsten Carbide



MCS5 - Tungsten Carbide

PRIMARY BELT CLEANERS

MDP - MATO Drop-on Primary Cleaner

- ✔ 1 piece full width Polyurethane (PU) blade option
- ✔ Quick and easy installation

The MDP - MATO Drop-on Primary Cleaner is the simplest primary cleaner available on the market, with its easy tension spring application for constant tensioning and reduced adjustability.

Quick and easy blade replacement by removing the blade locking pin is simple. The MDP range of Polyurethane Primary Cleaners are manufactured with a unique self-lubricating blade to reduce friction and blade wear.



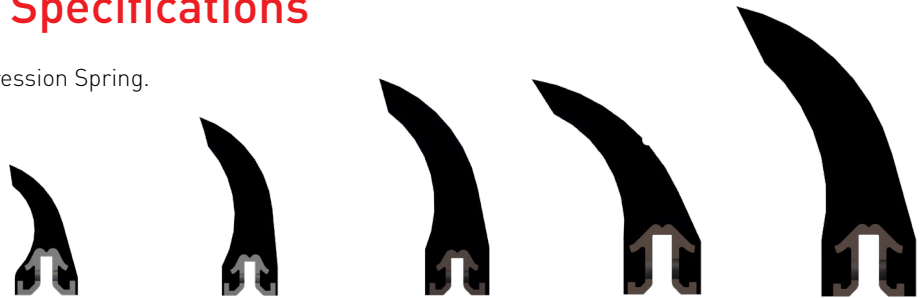
Above image shown with CS1 End Assembly



MATO have an optional plate style end assembly (CS2) available for special applications, please contact your MATO representative to discuss additional details as these are available upon request

MDP Technical Specifications

Tension Methods: CS - Compression Spring.



	MDP120	MDP185	MDP235	MDP235HD	MDP306HD
Blade Material	PU	PU	PU	PU	PU
Blade Height	120mm	185mm	235mm	235mm	306mm
Belt Speed	up to 3.5m/s	up to 3.5m/s	up to 5.0m/s	up to 5.0m/s	up to 7.5m/s
Head Pulley Diameters	250mm - 500mm	250mm - 900mm	400mm - 1000mm	400mm - 1000mm	500mm - 2100mm
Mechanical Fasteners	Yes	Yes	Yes	Yes	Yes
Reversing Belts	Yes	Yes	Yes	Yes	Yes

PRIMARY BELT CLEANERS

MTP - MATO T-Slot Primary Cleaner

✔ Individual 150mm Polyurethane (PU) blade option

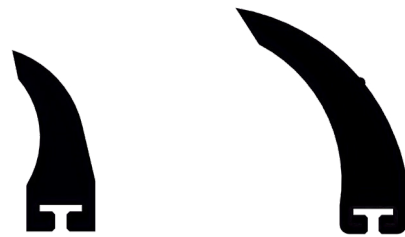
The MTP replacement blades are supplied in 150mm lengths and have an easy slide on slide off application.

The MTP P2 PU blade has MATO's unique self lubricated additive to prevent friction and blade wear.



MTP Technical Specifications

Tension Methods: CS - Compression Spring.



	MTP185	MTP235
Blade Material	PU	PU
Blade Height	185mm	235mm
Belt Speed	up to 3.5m/s	up to 5.0m/s
Head Pulley Diameters	250mm - 900mm	400mm - 1000mm
Mechanical Fasteners	Yes	Yes
Reversing Belts	Yes	Yes

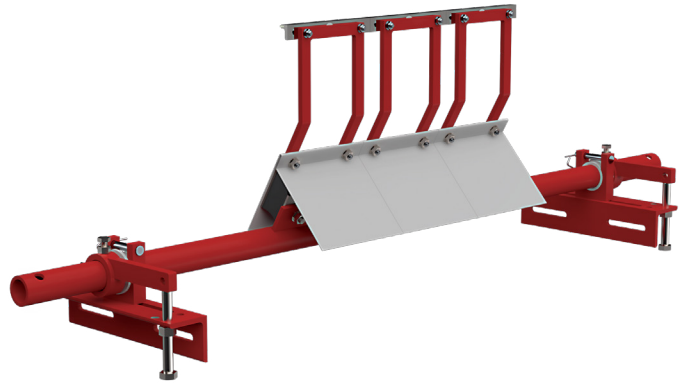
PRIMARY BELT CLEANERS

MCP1 - Tungsten Carbide Cleaner

✔ Individual Tungsten Carbide (TC) Blade

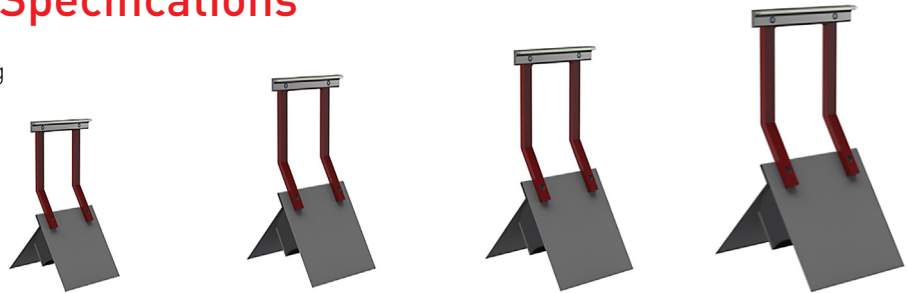
MATO standard MCP1 blade/ cushion arrangement.

2 blade options are available and 4 different arm sizes to suit multiple pulley diameters



MCP1 Technical Specifications

Tension Methods: Bolt Tensioning



	MCP1-SS	MCP1-S	MCP1-M	MCP1-L
Blade Material	TC	TC	TC	TC
Blade Widths	200mm	200mm	200mm	200mm
Blade Height	120mm	185mm	235mm	306mm
Belt Speed	up to 5.0m/s	up to 5.0m/s	up to 5.0m/s	up to 5.0m/s
Head Pulley Diameters	250mm - 500mm	500mm - 800mm	800mm - 1000mm	1000 - 1500mm
Mechanical Fasteners	No	No	No	No
Reversing Belts	Yes	Yes	Yes	Yes

SECONDARY BELT CLEANERS

MUS2 - Tungsten Carbide

- ✔ M-Trak segmented Blade Cleaners
- ✔ Slide on and off system for quick and easy installation

The MUS2 secondary cleaner is unique within itself to have a parallelogram designed into the cushion allowing constant blade angle attacking to the material flow, this allows for automatic adjustability within the cleaner for when the belt thickness can vary.

The MUS2 is well suited for conveyor belts with mechanical fasteners when the (TI) tungsten impact blade is applied.

For Vulcanised belt MATO recommend the (TL) tungsten long-life blade.



MUS3 - Tungsten Carbide

- ✔ M-Trak segmented Blade Cleaners
- ✔ Slide on and off system for quick and easy installation

The MUS3 cleaner is designed to fit in small and restricted conveyor areas where limited space is available. With its low profile it is an excellent option for a tungsten carbide secondary belt cleaner.

The MUS3 is also designed for reversing conveyor belts such as feeder belts or belts which have roll back.

Suitable for conveyors with mechanical belt fasteners.



SECONDARY BELT CLEANERS

MUS3 - Polyurethane

- ✔ M-Trak segmented Blade Cleaners
- ✔ Slide on and off system for quick and easy installation

The MUS3 Polyurethane cleaner is a versatile cleaner, can be used as a water wiper or an alternative cleaner within any full system to enhance removal of any remaining material.



MU Technical Specifications

Tension Methods: CS - Compression Spring or AB - Air Bag Tension.

Cushion for the MUS2 and MUS3 are available in 45 and 65 duro hardness for optimum belts speeds.

The MUS3 PU blade has a hardness of 93a.



	MUS2	MUS3	MUS3
Blade Material	TC - Tungsten Carbide	TC - Tungsten Carbide	PU - Polyurethane
Blade Increments	150mm	150mm	150mm
Belt Speed	up to 5.0m/s	up to 5.0m/s	up to 3.5m/s
For Reversing Belts	No	Yes	Yes
Mechanical Fasteners	Yes	Yes	Yes

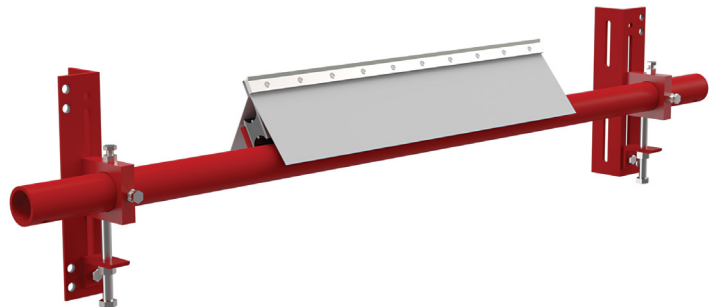
SECONDARY BELT CLEANERS

MCS2 - Tungsten Carbide

The MCS2 secondary cleaner is an excellent option to reduce the amount of carry back returned down the conveyor line.

The MCS2 allows for individual blade movement as each blade/cushion is individually mounted. Can be used as a stand alone cleaner, or for improved performance add in a pre cleaner on the head pulley.

The MCS2 is suitable for vulcanised belts only. There are 2 blade options available (TI) Tungsten Impact blade for harsh conditions, or the (TL) Tungsten Long-life blade where belt conditions are ideal.



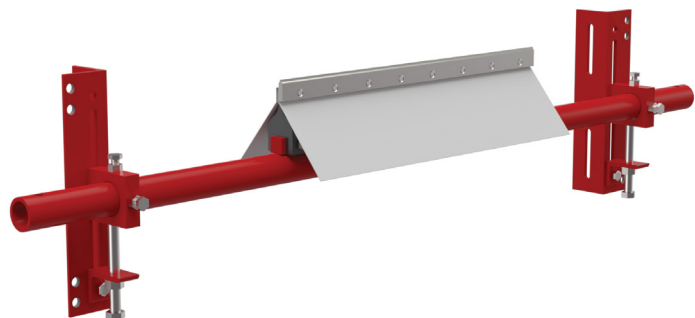
MCS3 - Tungsten Carbide

The MCS3 secondary cleaner is an excellent option to reduce the amount of carry back returned down the conveyor line.

The MCS3 allows for individual blade movement as each blade/cushion is individually mounted. Can be used as a stand alone cleaner, or for improved performance add in a pre cleaner on the head pulley.

The MCS3 cleaner is suitable for conveyor belts with mechanical fasteners. In addition the MCS3 is used for reversing / feeder conveyors.

2 blade options are available (TI) Tungsten Impact blade for mechanical fasteners or (TL) Tungsten Long-life blade where belt conditions are ideal.



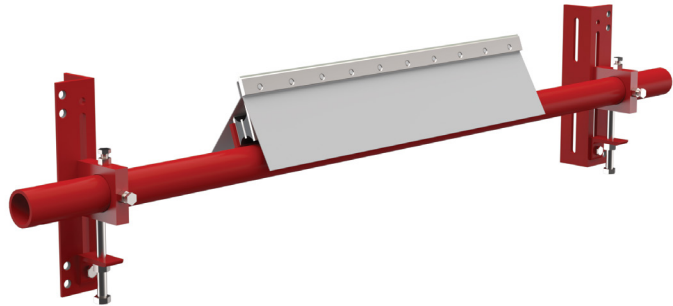
SECONDARY BELT CLEANERS

MCS4 - Tungsten Carbide

The MCS4 secondary cleaner is an excellent option to reduce the amount of carry back returned down the conveyor line.

The MCS4 allows for individual blade movement as each blade/cushion is individually mounted. Can be used as a stand alone cleaner, or for improved performance add in a pre cleaner on the head pulley.

The MCS4 is suitable for conveyors with mechanical fasteners.

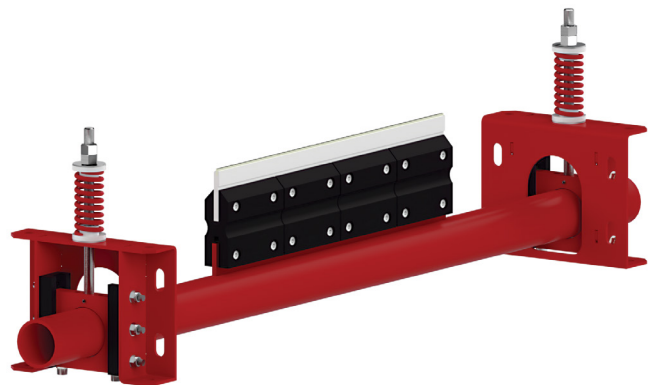


MCS5 - Tungsten Carbide

Heavy Duty MCS5 secondary cleaner is an excellent option to reduce the amount of carry back returned down the conveyor line. The MCS5 arrangement has a special hardened steel heat treated blade to with stand abrasion, impact and durability.

The MCS5 allows for individual blade movement as each blade/cushion is individually mounted. Can be used as a stand alone cleaner or for improved performance add in a pre cleaner on the head pulley.

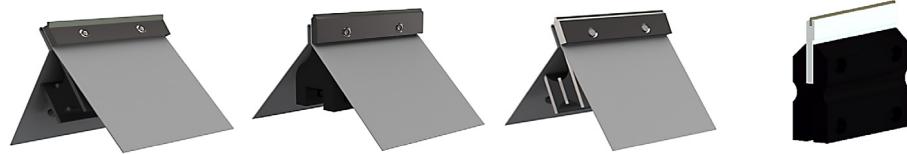
The MCS5 is suitable for conveyors with mechanical fasteners.



SECONDARY BELT CLEANERS

MCS Technical Specifications

The MC range of bolt-on secondary cleaners for customers who currently use equivalent products.



	MCS2	MCS3	MCS4	MCS5
Blade Material	TC - Tungsten Carbide	TC - Tungsten Carbide	TC - Tungsten Carbide	TC - Tungsten Carbide
Blade Increments	150mm	150mm	150mm	150mm
Belt Speed	up to 5.0m/s	up to 5.0m/s	up to 5.0m/s	up to 5.0m/s
For Reversing Belts	No	Yes	No	Yes
Mechanical Fasteners	No	Yes	Yes	Yes

Enquire about the Belt Cleaner range

✉ belllacing@mato.de

🌐 www.mato.de

**Global expertise in
Belt Maintenance Equipment**

mato



MATO GmbH & Co KG
Benzstr. 16-24
63165 Mühlheim a.M.
Germany
T: +49 (0) 6108 906 0
F: +49 (0) 6108 906 120
www.mato.de
beltlacing@mato.de



MATO Industries Ltd.
Unit 1 Philips Road
Whitebirk Ind. Estate
Blackburn, Lancashire
BB1 5PG United Kingdom
T: +44 (0) 1254 387638
F: +44 (0) 1254 238023
info@mato.co.uk



MATO Corporation
Unit 1 Resource Drive
Beckley, WV 25801
West Virginia USA
T: +1 304 255 1280
F: +1 304 255 2501
info@mato-usa.com



MATO Kasachstan
Erzhanov Street 18
100009 Karaganda
Republic Kasachstan
T: +7 (0) 7 212 910 063
F: +7 (0) 7 212 910 063
office@mato.kz



MATO France S.A.R.L.
Zone Artisanale du Grunhof
2 Rue du Grunhof
57890 Porcellette, France
T: +33 (0) 3 87821215
F: +33 (0) 3 87297213
mato.france@mato.de



MATO Iberica, S.L.U.
Pol. Industrial Mora Garay
Calle Marie Curie, parc. 36/38
E-33211 Gijón, Spain
T: +34 (0) 985 328900 / 328211
F: +34 (0) 985 322647
matoiberica@matoiberica.es



MATO Suisse AG
Industriestrasse 53
CH-6034 Inwil
Switzerland
T: +41 (0) 41 4490990
F: +41 (0) 41 4490992
info@mato.ch www.mato.ch



MATO Uglemechanisatija
Str. Krymskogo 27A
03142 Kiew
Ukraine
T: +38 (0) 504759258
ygm1@mail.ru



MATO Australia Pty Ltd.
39 Bonville Avenue
Thornton, NSW 2322
Australia
T: +61 1300 850 795
F: +61 2 4936 1388
maus@mato.com.au



MATO Industrial Technologies
(Qufu) Co., Ltd.
West End of Changchun Road,
Development Zone of Qufu City
273100 Qufu City, Shandong
China, PRC
T: +86 537 4533799
F: +86 537 4533299
info@mato.com.cn



MATO Sales Rep. Latin America
Cra.41a N°22 Sur 87
Envigado,
Colombia
T: +57 317 3620751
csouto@mato-latam.com



MATO Products Pty Ltd.
P.O. Box 224
Kempton Park 1620
28 Forge Road Spartan
South Africa
T: +27 (0) 11 928 4163
F: +27 (0) 11 923 6071
matosales@multotec.co.za



MATO Sib
Uliza Telefonnaja 15
Kemerovo
652523 Leninsk-Kusnezkiy
Russian Federation
T: +7 (0) 38456 35166
F: +7 (0) 38456 35166
mato-sib@yandex.ru



ISO 9001

